

## PE Anti-Mouse/Human CD44 Monoclonal Antibody



天津三箭生物技术股份有限公司  
Tianjin Sungene Biotech Co., Ltd.  
精准 高效 稳定 Precision Efficient Stable

**Market** | 400-621-0003  
marketing@sungenebiotech.com

**Support** | 022-66211636-8024  
techsupport@sungenebiotech.com

**Web** | www.sungenebiotech.com

Catalog Number	Vial Size
MH10441-09B	50 µg
MH10441-09D	200 µg
MH10441-09G	25 tests
MH10441-09H	100 tests

**Important Note:** Centrifuge before opening to ensure complete recovery of vial contents.  
This product is guaranteed up to one year from purchase.

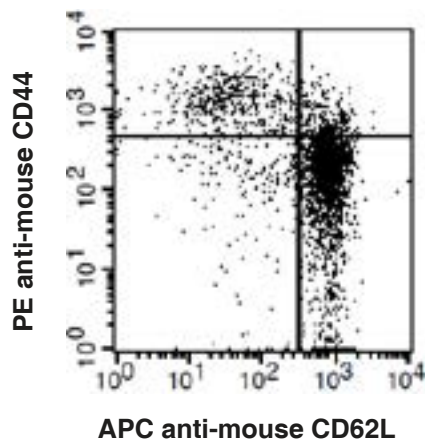
### Purified Antibody Characterization

Clone	Isotype	Reactivity
IM7	Rat IgG2b	Mouse/Human

### Description

CD44 is a 80-95 kD glycoprotein also known as Hermes, Pgp1, H-CAM, or HUTCH. It is expressed on all leukocytes, endothelial cells, hepatocytes, and mesenchymal cells. As B and T cells become activated or progress to the memory stage, CD44 expression increases from low or mid-levels to high levels. Thus, CD44 has been reported to be a valuable marker for memory cell subsets. High CD44 expression on Treg cells has been associated with potent suppressive function via high production of IL-10. CD44 is an adhesion molecule involved in leukocyte attachment to and rolling on endothelial cells, homing to peripheral lymphoid organs and to the sites of inflammation, and leukocyte aggregation.

### Illustration of Immunofluorescent Staining



C57BL/6 mouse splenocytes CD4+ stained with PE anti-mouse CD44 and APC anti-mouse CD62L

### Product Information

**Conjugation:** PE

**Formulation:** PBS pH 7.2, 0.09% NaN<sub>3</sub>, 0.2% BSA

**Concentration:** 0.2 mg/ml

**Storage:** Keep as concentrated solution. Store at 4°C and protected from prolonged exposure to light. **Do not freeze.**

**Application:** Recommended Application: FC

**Usage:** Each lot of this antibody is quality control tested by immunofluorescent staining with flow cytometric analysis. For immunofluorescent staining, For test sizes, the suggested use of this reagent for immunofluorescent staining is 5 µl per million cells or 5 µl per 100 µl of whole blood. For µg sizes, the suggested use of this reagent for immunofluorescent staining is ≤0.25 µg per 10<sup>6</sup> cells in 100 µl volume. It is recommended that the reagent be titrated for optimal performance for each application.

### References

- [1] Barclay AN, et al. 1997. The Leukocyte Antigen FactsBook Academic Press.
- [2] Goldstein LA, et al. 1989. Cell 56:1063.
- [3] Budd RC, et al. 1987. J. Immunol. 138:3120.
- [4] Yamazaki J, et al. 2009. Blood PubMed.
- [5] Kmiecik M, et al. 2009. J. Transl. Med. 7:89.

**For Research Use Only.**